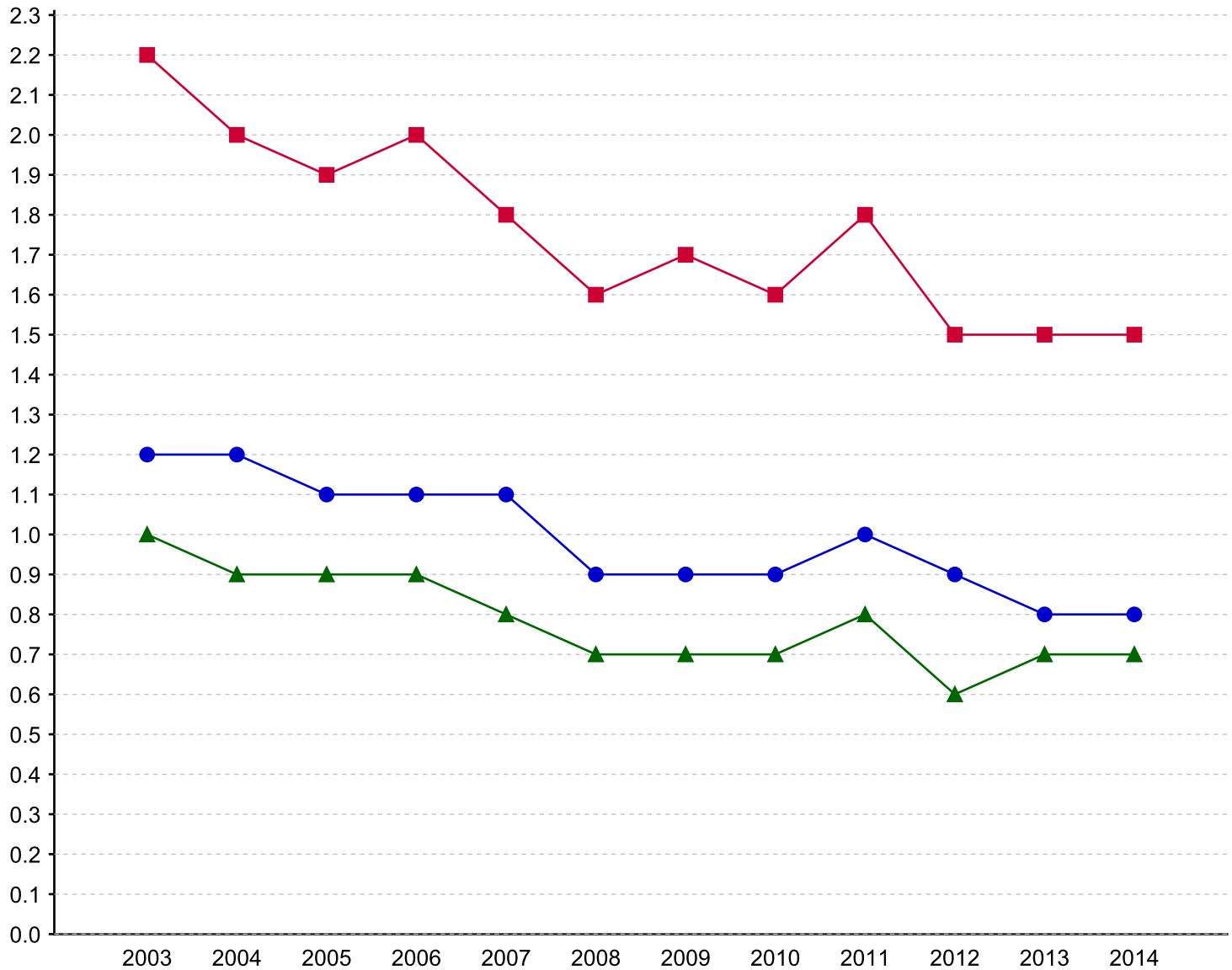


Nonfatal occupational injury and illness incidence rates by case type, South Carolina, private industry, 2003-2014

| Year | Cases with days away from work, job transfer, or restriction | Cases with days away from work | Cases with job transfer, or restriction |
|------|--|--------------------------------|---|
| 2003 | 2.2 | 1.2 | 1.0 |
| 2004 | 2.0 | 1.2 | 0.9 |
| 2005 | 1.9 | 1.1 | 0.9 |
| 2006 | 2.0 | 1.1 | 0.9 |
| 2007 | 1.8 | 1.1 | 0.8 |
| 2008 | 1.6 | 0.9 | 0.7 |
| 2009 | 1.7 | 0.9 | 0.7 |
| 2010 | 1.6 | 0.9 | 0.7 |
| 2011 | 1.8 | 1.0 | 0.8 |
| 2012 | 1.5 | 0.9 | 0.6 |
| 2013 | 1.5 | 0.8 | 0.7 |
| 2014 | 1.5 | 0.8 | 0.7 |

Nonfatal occupational injury and illness incidence rates by case type, South Carolina, private industry, 2003-2014
[SOURCE : U.S. Bureau of Labor Statistics, U.S. Department of Labor, 2015]

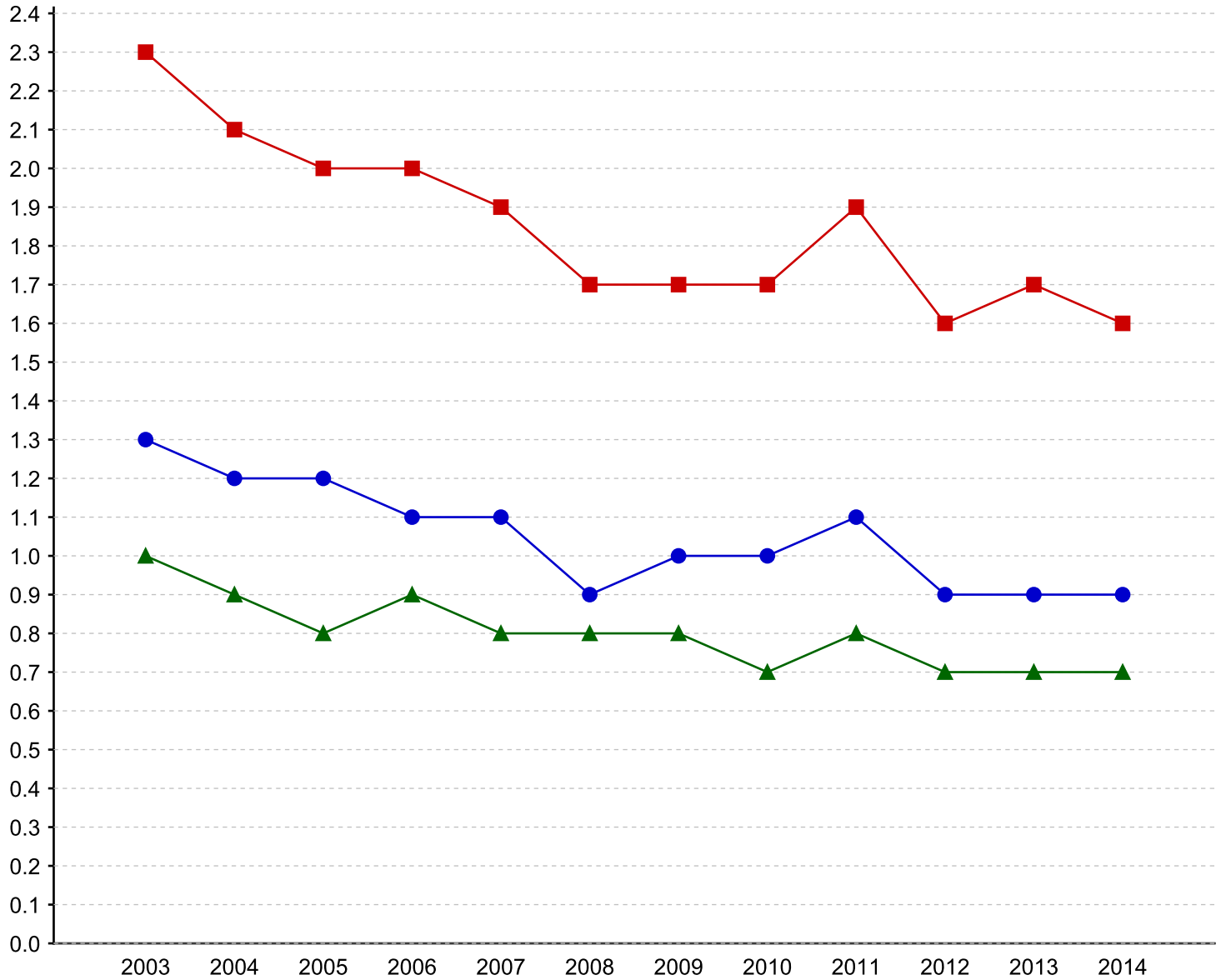


■ Cases with days away from work, job transfer, or restriction ● Cases with days away from work
▲ Cases with days of job transfer, or restriction

Nonfatal occupational injury and illness incidence rates by case type, South Carolina, all ownerships, 2003-2014

| Year | Cases with days away from work, job transfer, or restriction | Cases with days away from work | Cases with job transfer, or restriction |
|------|--|--------------------------------|---|
| 2003 | 2.3 | 1.3 | 1.0 |
| 2004 | 2.1 | 1.2 | 0.9 |
| 2005 | 2.0 | 1.2 | 0.8 |
| 2006 | 2.0 | 1.1 | 0.9 |
| 2007 | 1.9 | 1.1 | 0.8 |
| 2008 | 1.7 | 0.9 | 0.8 |
| 2009 | 1.7 | 1.0 | 0.8 |
| 2010 | 1.7 | 1.0 | 0.7 |
| 2011 | 1.9 | 1.1 | 0.8 |
| 2012 | 1.6 | 0.9 | 0.7 |
| 2013 | 1.7 | 0.9 | 0.7 |
| 2014 | 1.6 | 0.9 | 0.7 |

Nonfatal occupational injury and illness incidence rates by case type, South Carolina, all ownerships, 2003-2014
[SOURCE : U.S. Bureau of Labor Statistics, U.S. Department of Labor, 2015]

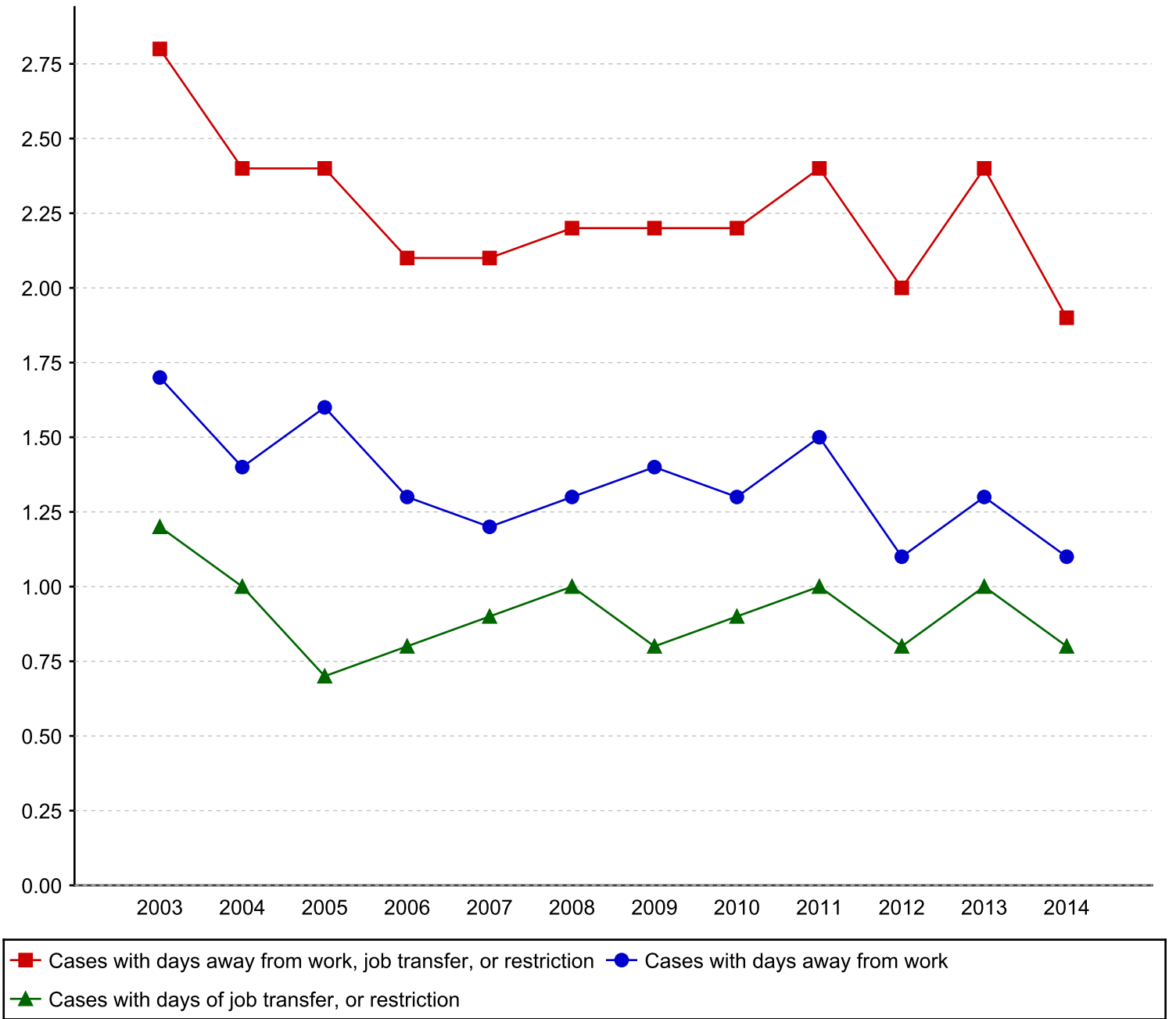


■ Cases with days away from work, job transfer, or restriction ● Cases with days away from work
▲ Cases with days of job transfer, or restriction

Nonfatal occupational injury and illness incidence rates by case type, South Carolina, state and local government, 2003-2014

| Year | Cases with days away from work, job transfer, or restriction | Cases with days away from work | Cases with job transfer, or restriction |
|------|--|--------------------------------|---|
| 2003 | 2.8 | 1.7 | 1.2 |
| 2004 | 2.4 | 1.4 | 1.0 |
| 2005 | 2.4 | 1.6 | 0.7 |
| 2006 | 2.1 | 1.3 | 0.8 |
| 2007 | 2.1 | 1.2 | 0.9 |
| 2008 | 2.2 | 1.3 | 1.0 |
| 2009 | 2.2 | 1.4 | 0.8 |
| 2010 | 2.2 | 1.3 | 0.9 |
| 2011 | 2.4 | 1.5 | 1.0 |
| 2012 | 2.0 | 1.1 | 0.8 |
| 2013 | 2.4 | 1.3 | 1.0 |
| 2014 | 1.9 | 1.1 | 0.8 |

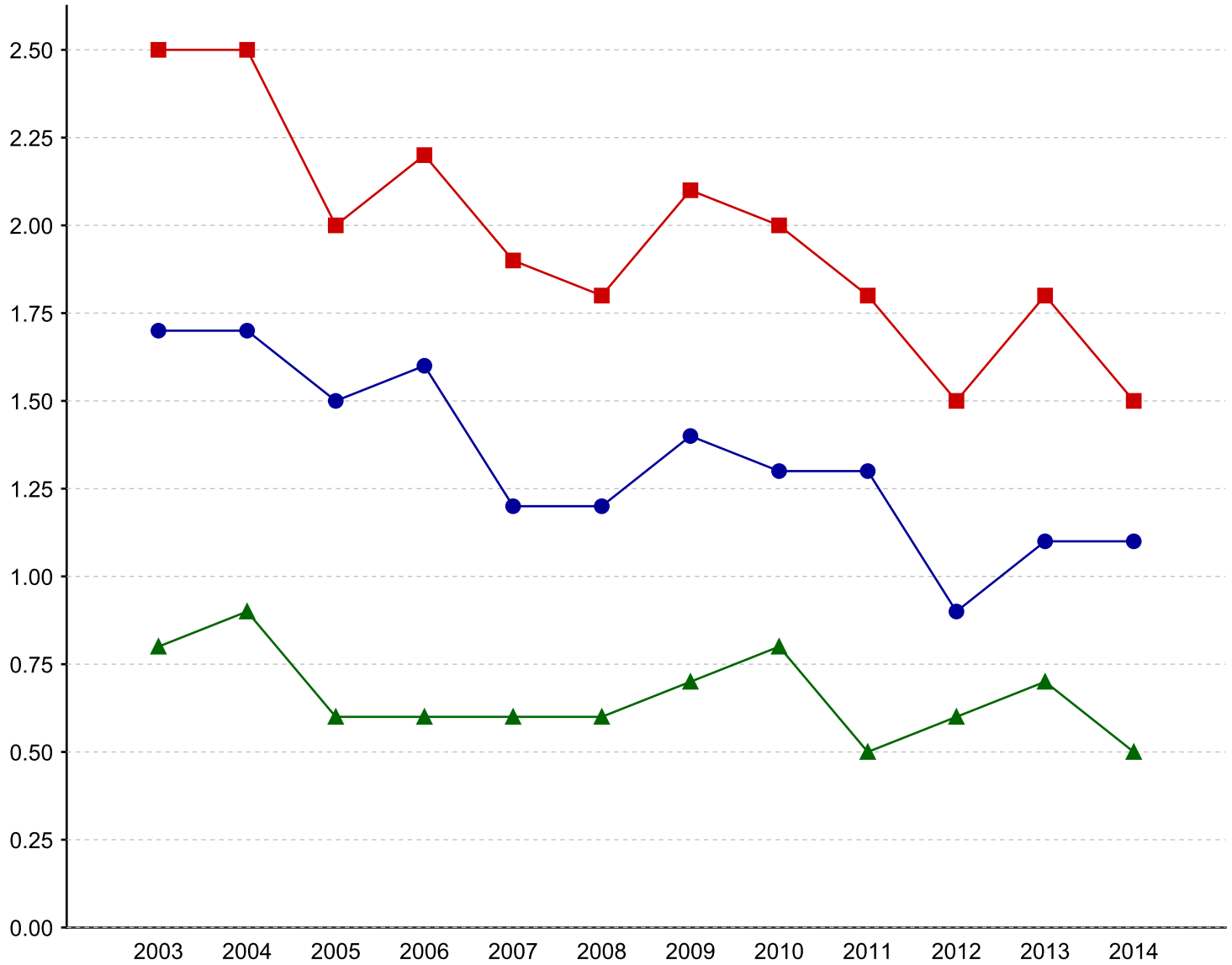
Nonfatal occupational injury and illness incidence rates by case type, South Carolina, state and local government, 2003-2014
[SOURCE : U.S. Bureau of Labor Statistics, U.S. Department of Labor, 2015]



Nonfatal occupational injury and illness incidence rates by case type, South Carolina, state government, 2003-2014

| Year | Cases with days away from work, job transfer, or restriction | Cases with days away from work | Cases with job transfer, or restriction |
|------|--|--------------------------------|---|
| 2003 | 2.5 | 1.7 | 0.8 |
| 2004 | 2.5 | 1.7 | 0.9 |
| 2005 | 2.0 | 1.5 | 0.6 |
| 2006 | 2.2 | 1.6 | 0.6 |
| 2007 | 1.9 | 1.2 | 0.6 |
| 2008 | 1.8 | 1.2 | 0.6 |
| 2009 | 2.1 | 1.4 | 0.7 |
| 2010 | 2.0 | 1.3 | 0.8 |
| 2011 | 1.8 | 1.3 | 0.5 |
| 2012 | 1.5 | 0.9 | 0.6 |
| 2013 | 1.8 | 1.1 | 0.7 |
| 2014 | 1.5 | 1.1 | 0.5 |

Nonfatal occupational injury and illness incidence rates by case type, South Carolina, state government, 2003-2014
[SOURCE : U.S. Bureau of Labor Statistics, U.S. Department of Labor, 2015]



■ Cases with days away from work, job transfer, or restriction ● Cases with days away from work
▲ Cases with days of job transfer, or restriction

Nonfatal occupational injury and illness incidence rates by case type, South Carolina, local government, 2003-2014

| Year | Cases with days away from work, job transfer, or restriction | Cases with days away from work | Cases with job transfer, or restriction |
|------|--|--------------------------------|---|
| 2003 | 3.0 | 1.7 | 1.4 |
| 2004 | 2.3 | 1.3 | 1.0 |
| 2005 | 2.5 | 1.7 | 0.8 |
| 2006 | 2.0 | 1.1 | 0.9 |
| 2007 | 2.2 | 1.2 | 1.0 |
| 2008 | 2.5 | 1.3 | 1.2 |
| 2009 | 2.3 | 1.3 | 0.9 |
| 2010 | 2.3 | 1.3 | 0.9 |
| 2011 | 2.7 | 1.5 | 1.2 |
| 2012 | 2.1 | 1.2 | 0.9 |
| 2013 | 2.6 | 1.4 | 1.2 |
| 2014 | 2.1 | 1.1 | 1.0 |

Nonfatal occupational injury and illness incidence rates by case type, South Carolina, local government, 2003-2014
[SOURCE : U.S. Bureau of Labor Statistics, U.S. Department of Labor, 2015]

