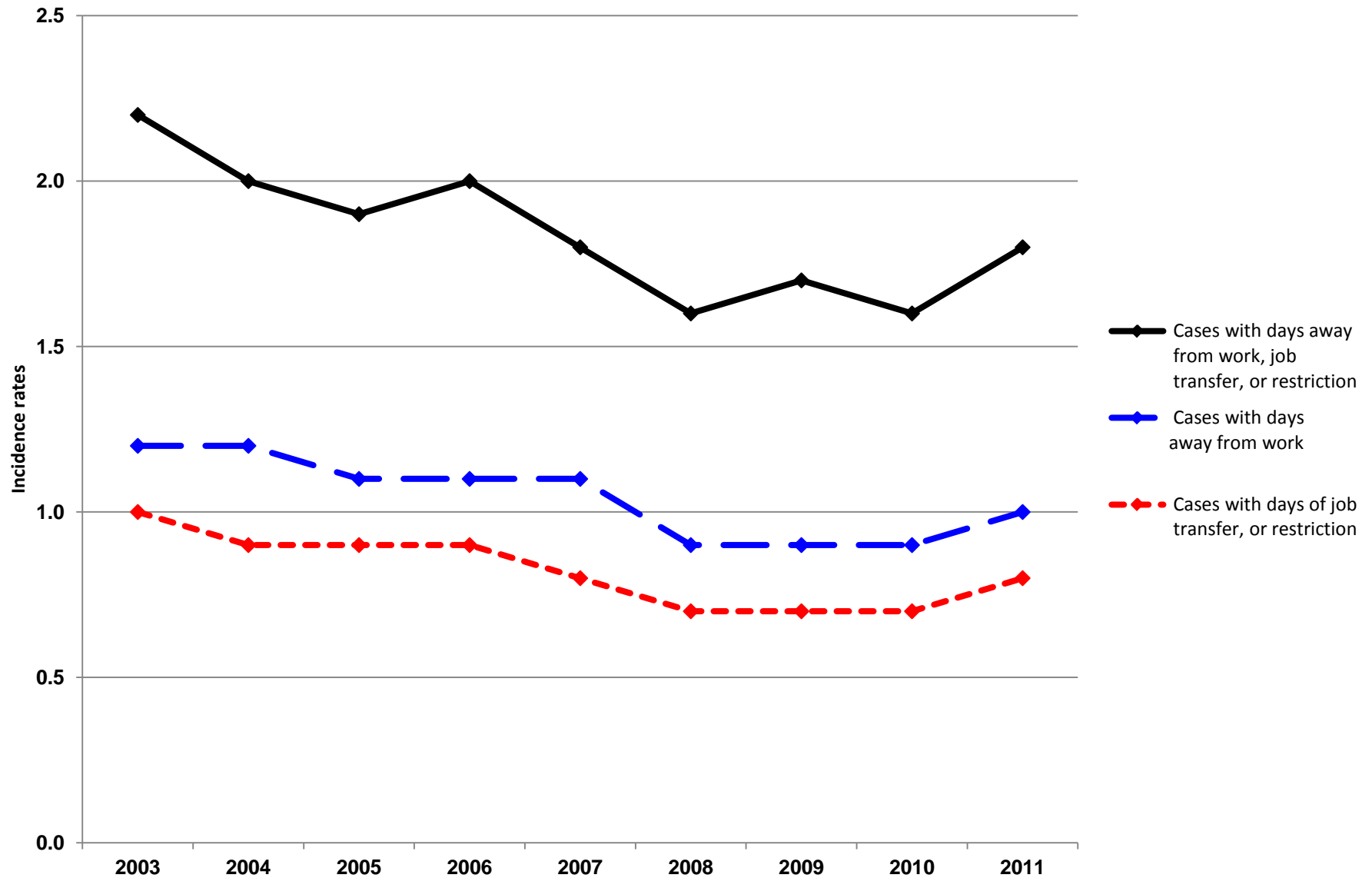
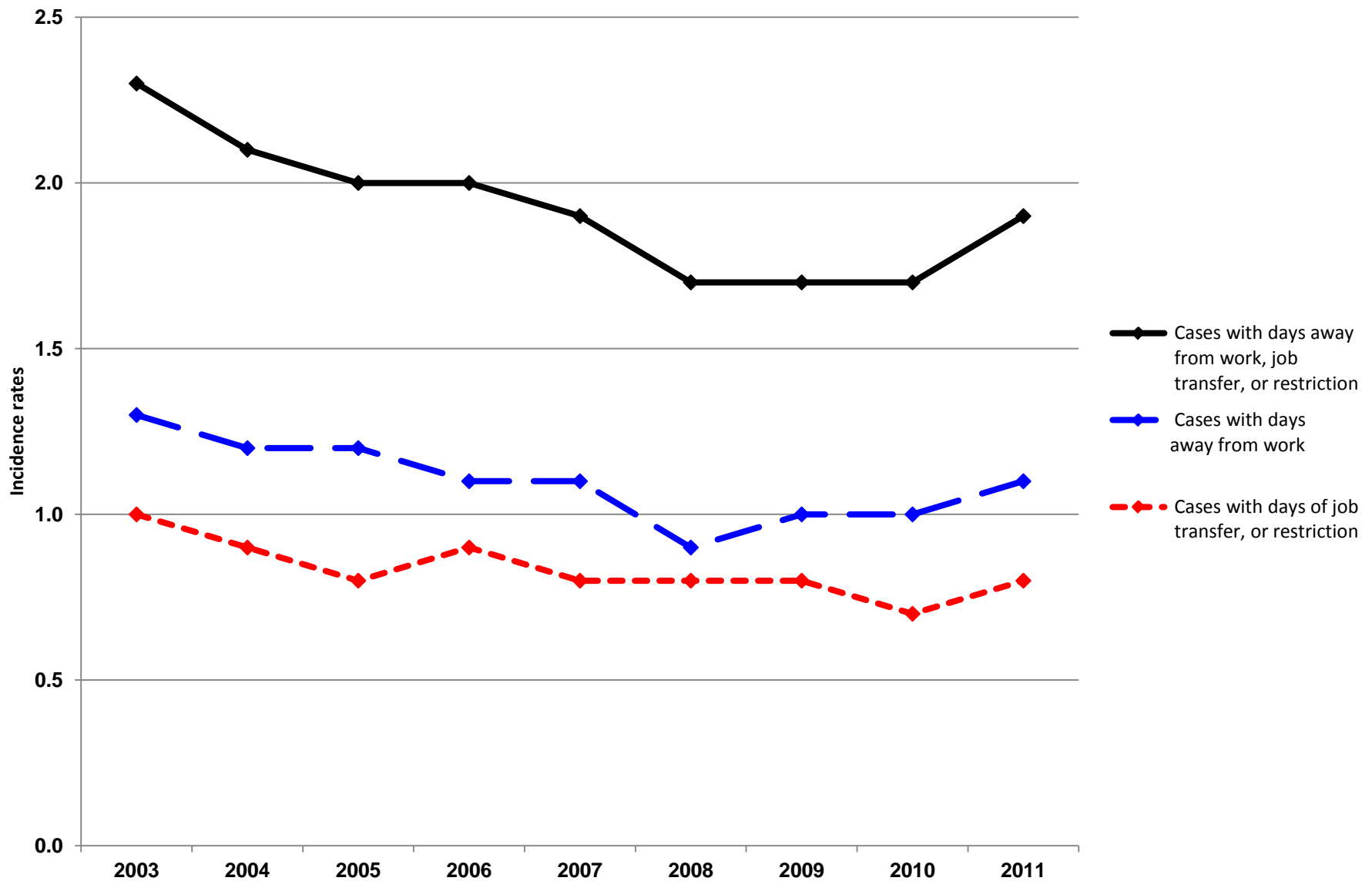


Cases with days away from work, job transfer, or restriction incidence rates, injuries and illnesses, South Carolina, private industry, 2003-2011



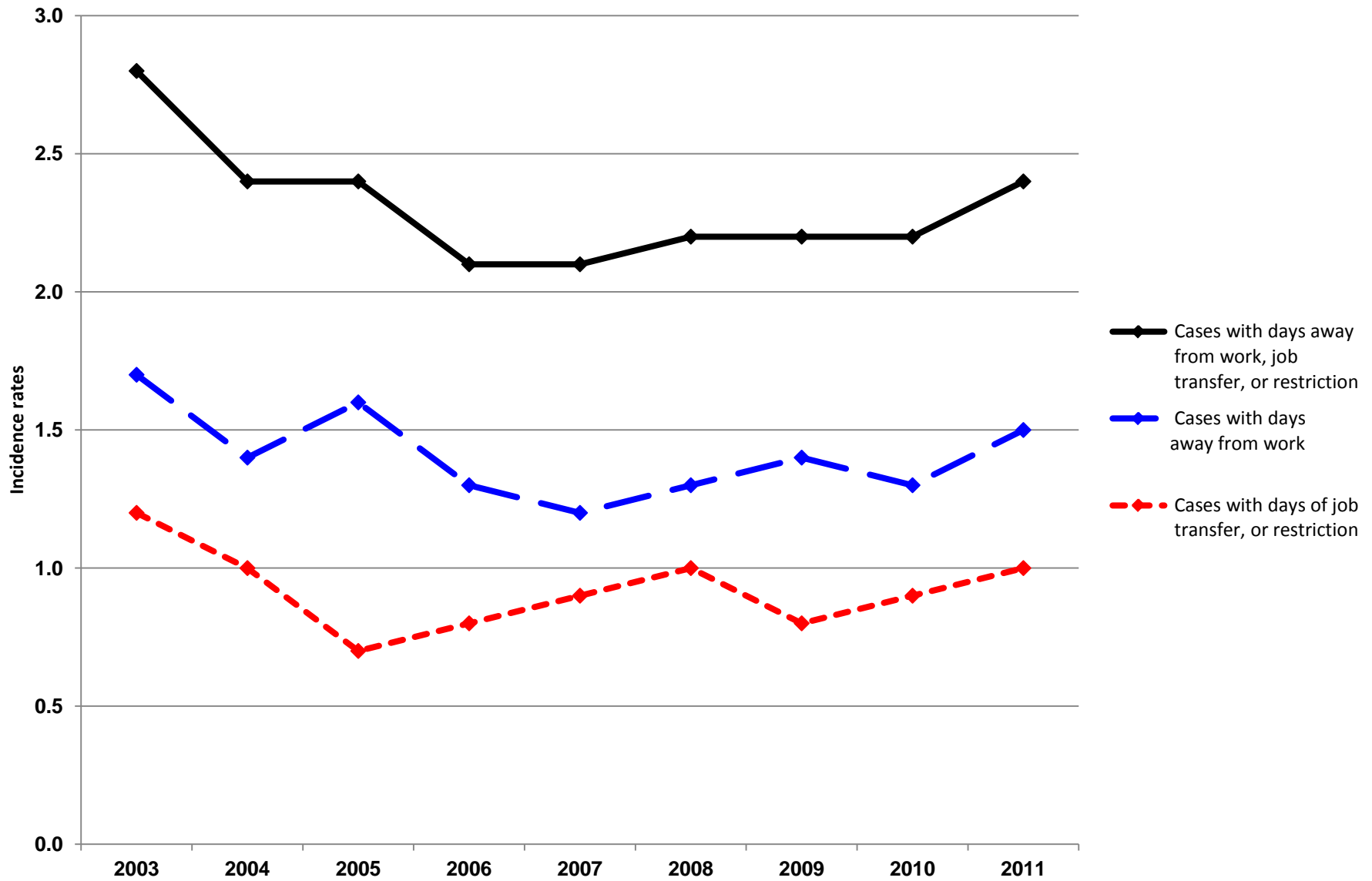
SOURCE: Bureau of Labor Statistics, U.S. Department of Labor, Survey of Occupational Injuries and Illnesses in cooperation with participating State agencies.

Cases with days away from work, job transfer, or restriction incidence rates, injuries and illnesses, South Carolina, all ownerships, 2003-2011



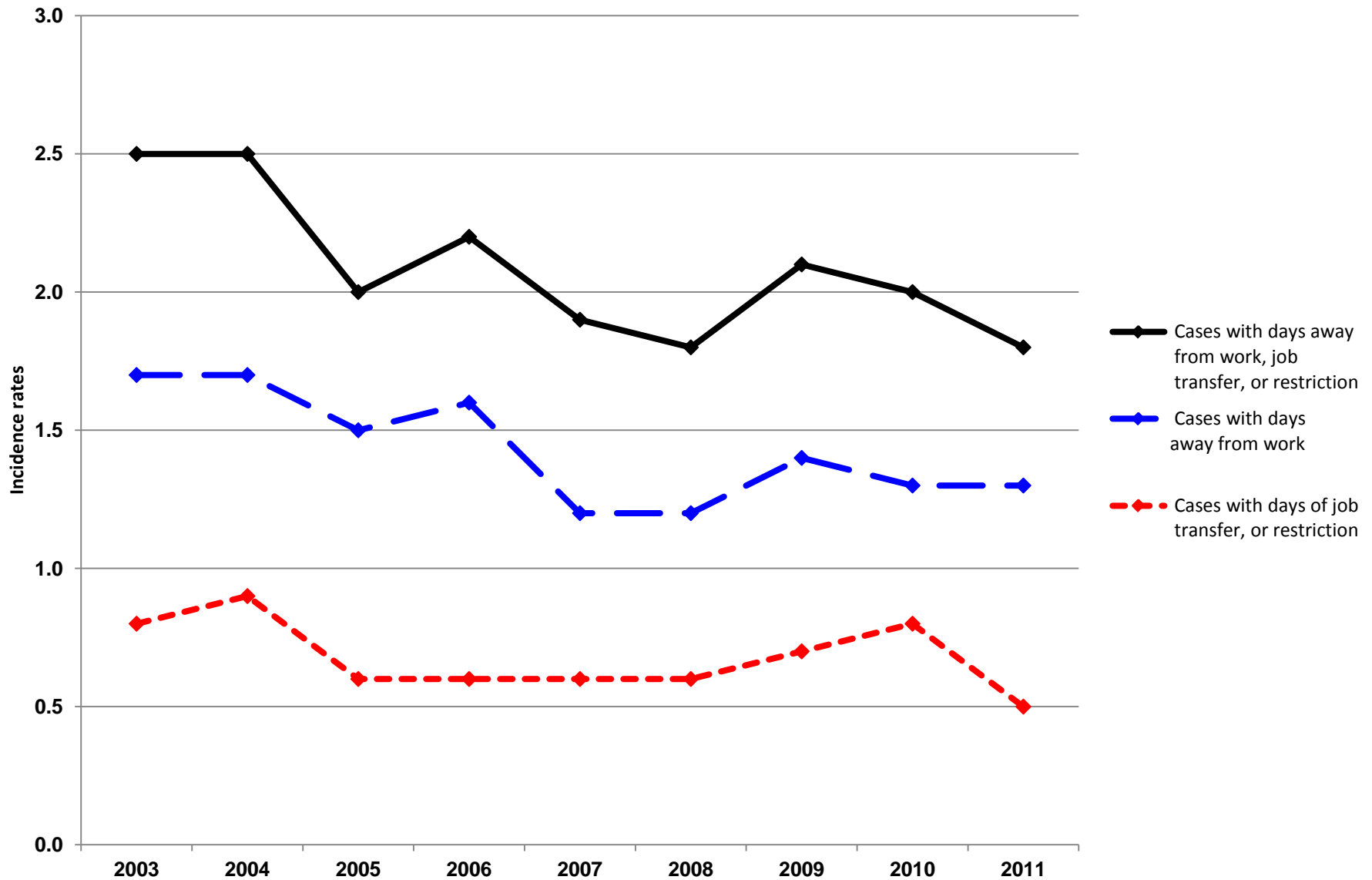
SOURCE: Bureau of Labor Statistics, U.S. Department of Labor, Survey of Occupational Injuries and Illnesses in cooperation with participating State agencies.

**Cases with days away from work, job transfer, or restriction incidence rates,
injuries and illnesses,
South Carolina, state and local governments, 2003-2011**



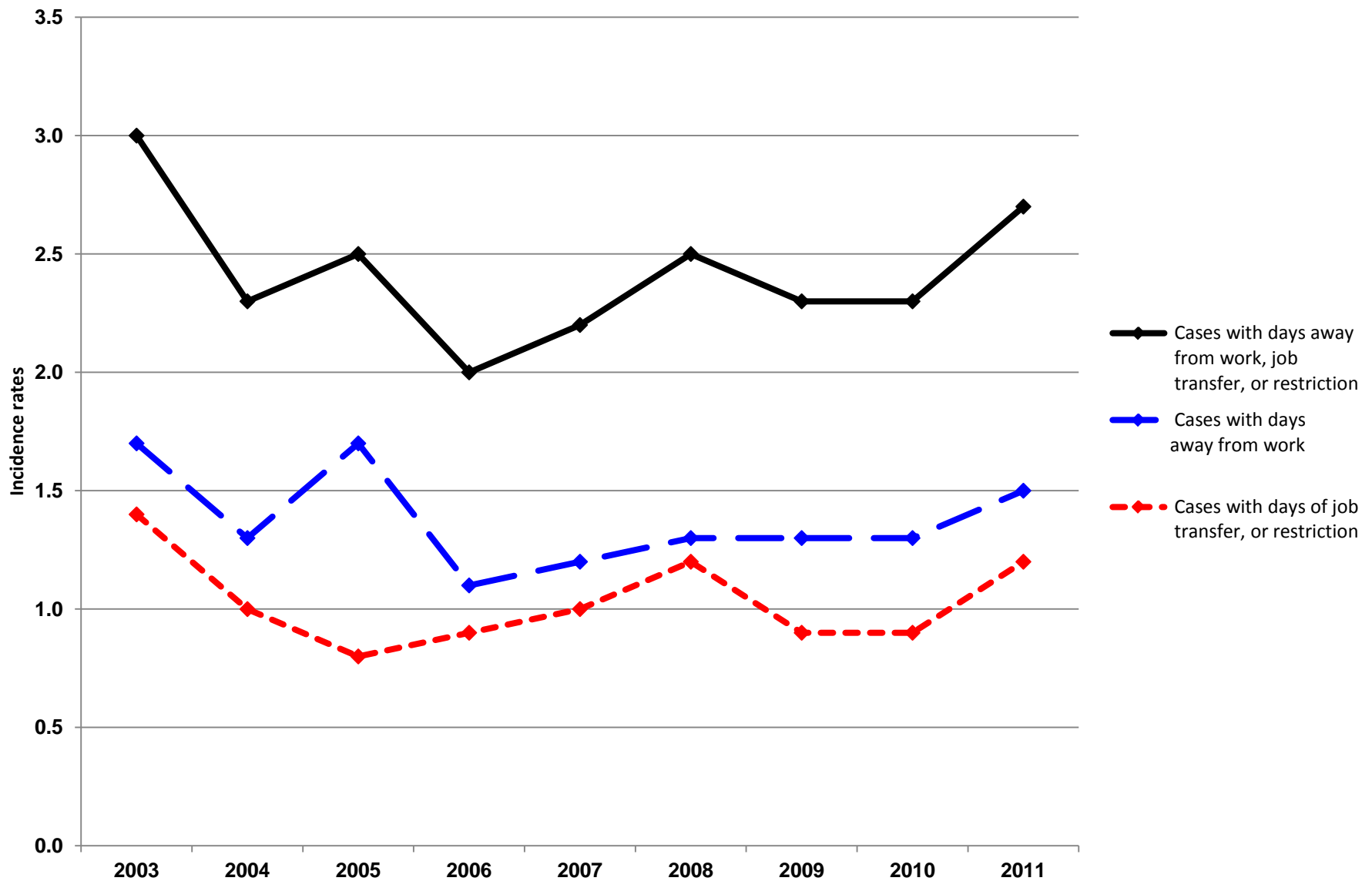
SOURCE: Bureau of Labor Statistics, U.S. Department of Labor, Survey of Occupational Injuries and Illnesses in cooperation with participating State agencies.

**Cases with days away from work, job transfer, or restriction incidence rates,
injuries and illnesses,
South Carolina, state government, 2003-2011**



SOURCE: Bureau of Labor Statistics, U.S. Department of Labor, Survey of Occupational Injuries and Illnesses in cooperation with participating State agencies.

Cases with days away from work, job transfer, or restriction incidence rates, injuries and illnesses, South Carolina, local government, 2003-2011



	2003	2004	2005	2006	2007	2008	2009	2010	2011
Cases with days away from work, job transfer, or restriction	2.2	2.0	1.9	2.0	1.8	1.6	1.7	1.6	1.8
Cases with days away from work	1.2	1.2	1.1	1.1	1.1	0.9	0.9	0.9	1.0
Cases with days of job transfer, or restriction	1.0	0.9	0.9	0.9	0.8	0.7	0.7	0.7	0.8

	2003	2004	2005	2006	2007	2008	2009	2010	2011
Cases with days away from work, job transfer, or restriction	2.3	2.1	2.0	2.0	1.9	1.7	1.7	1.7	1.9
Cases with days away from work	1.3	1.2	1.2	1.1	1.1	0.9	1.0	1.0	1.1

Cases with days of job transfer, or restriction	1.0	0.9	0.8	0.9	0.8	0.8	0.8	0.7	0.8
---	-----	-----	-----	-----	-----	-----	-----	-----	-----

	2003	2004	2005	2006	2007	2008	2009	2010	2011
--	------	------	------	------	------	------	------	------	------

Cases with days away from work, job transfer, or restriction	2.8	2.4	2.4	2.1	2.1	2.2	2.2	2.2	2.4
--	-----	-----	-----	-----	-----	-----	-----	-----	-----

Cases with days away from work	1.7	1.4	1.6	1.3	1.2	1.3	1.4	1.3	1.5
--------------------------------	-----	-----	-----	-----	-----	-----	-----	-----	-----

Cases with days of job transfer, or restriction	1.2	1.0	0.7	0.8	0.9	1.0	0.8	0.9	1.0
---	-----	-----	-----	-----	-----	-----	-----	-----	-----

	2003	2004	2005	2006	2007	2008	2009	2010	2011
--	------	------	------	------	------	------	------	------	------

Cases with days away from work, job transfer, or restriction	2.5	2.5	2.0	2.2	1.9	1.8	2.1	2.0	1.8
--	-----	-----	-----	-----	-----	-----	-----	-----	-----

Cases with days away from work	1.7	1.7	1.5	1.6	1.2	1.2	1.4	1.3	1.3
Cases with days of job transfer, or restriction	0.8	0.9	0.6	0.6	0.6	0.6	0.7	0.8	0.5

2003 2004 2005 2006 2007 2008 2009 2010 2011

Cases with days away from work, job transfer, or restriction	3.0	2.3	2.5	2.0	2.2	2.5	2.3	2.3	2.7
Cases with days away from work	1.7	1.3	1.7	1.1	1.2	1.3	1.3	1.3	1.5
Cases with days of job transfer, or restriction	1.4	1.0	0.8	0.9	1.0	1.2	0.9	0.9	1.2