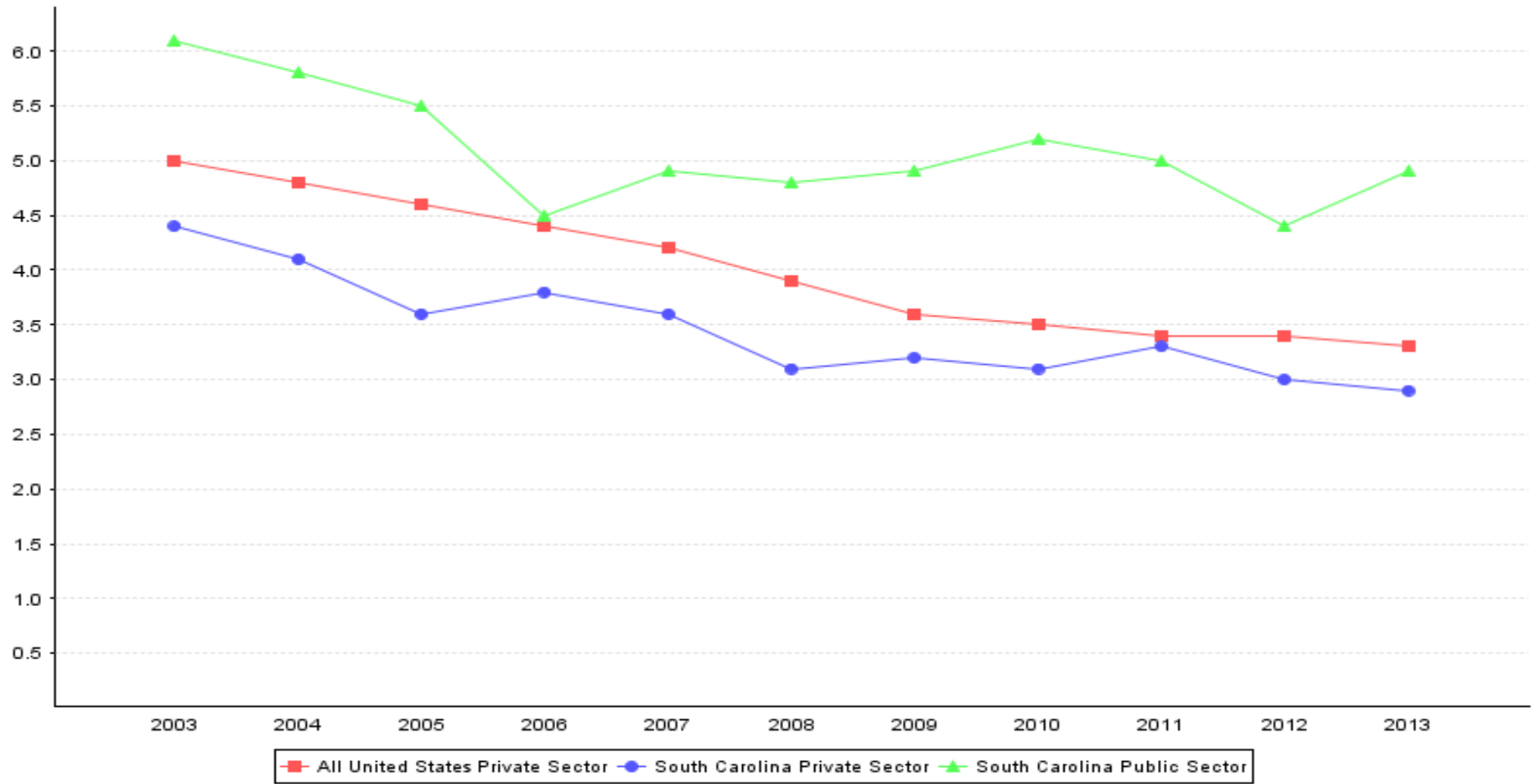


Incidence rates per 100 full-time workers for total nonfatal occupational injuries and illnesses, South Carolina and All United States, 2003-2013
[SOURCE : U.S. Bureau of Labor Statistics, U.S. Department of Labor, 2014]



Incidence rates per 100 full-time workers for total nonfatal occupational injuries and illnesses, South Carolina and All United States, 2003-2013

Year	All United States Private Sector	South Carolina Private Sector	South Carolina Public Sector
2003	5.0	4.4	6.1
2004	4.8	4.1	5.8
2005	4.6	3.6	5.5
2006	4.4	3.8	4.5
2007	4.2	3.6	4.9
2008	3.9	3.1	4.8
2009	3.6	3.2	4.9
2010	3.5	3.1	5.2
2011	3.4	3.3	5.0
2012	3.4	3.0	4.4
2013	3.3	2.9	4.9