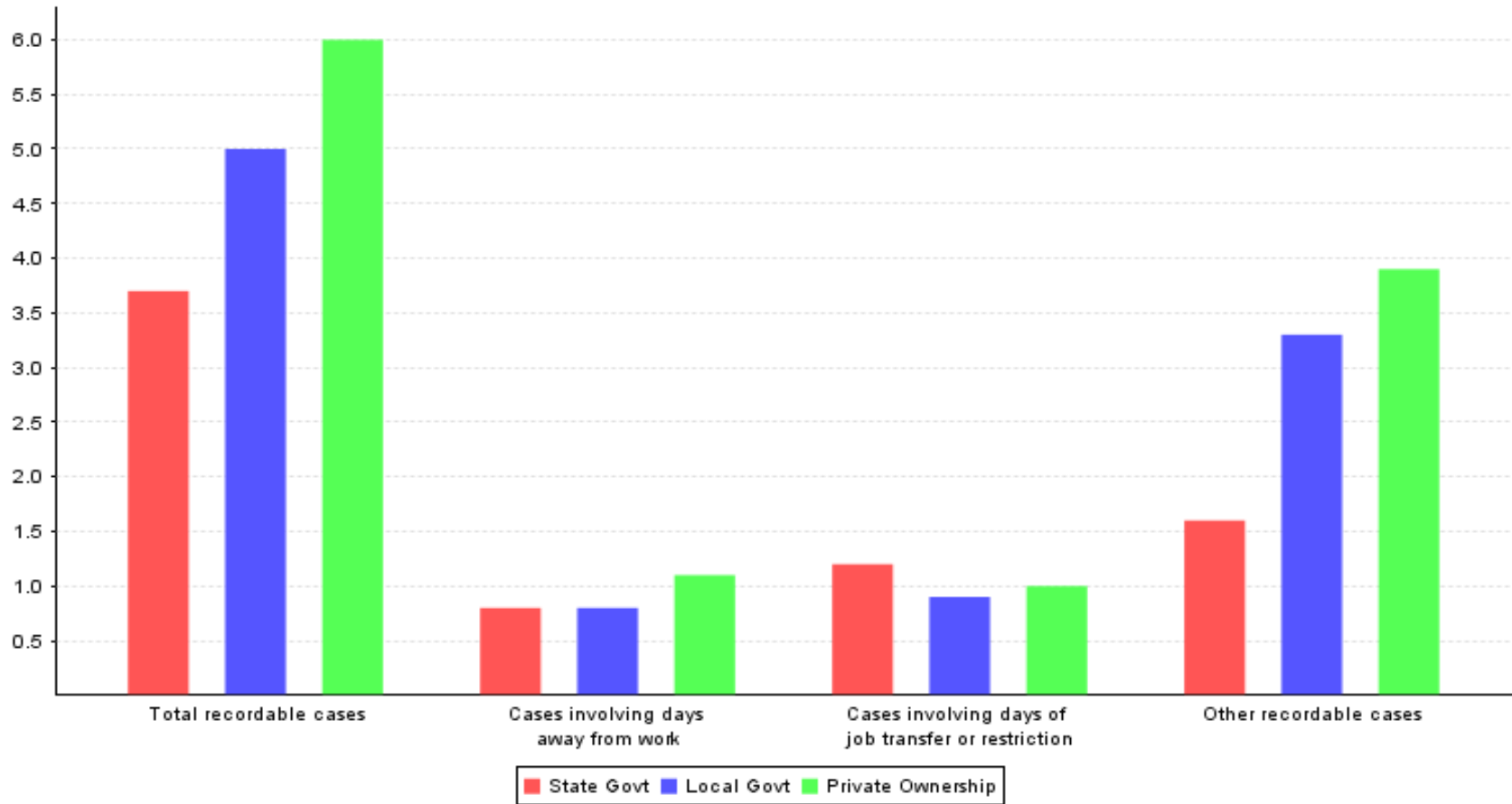


Incidence rates of occupational injuries and illnesses in hospitals (NAICS 622) by ownership and case type, South Carolina, 2013  
[SOURCE : U.S. Bureau of Labor Statistics, U.S. Department of Labor, 2014]



**Incidence rates of occupational injuries and illnesses in hospitals (NAICS 622) by ownership and case type, South Carolina, 2013**

Ownership	State government	Local government	Private ownership
Total recordable cases	3.7	5.0	6.0
Cases involving days away from work	0.8	0.8	1.1
Cases involving days of job transfer or restriction	1.2	0.9	1.0
Other recordable cases	1.6	3.3	3.9