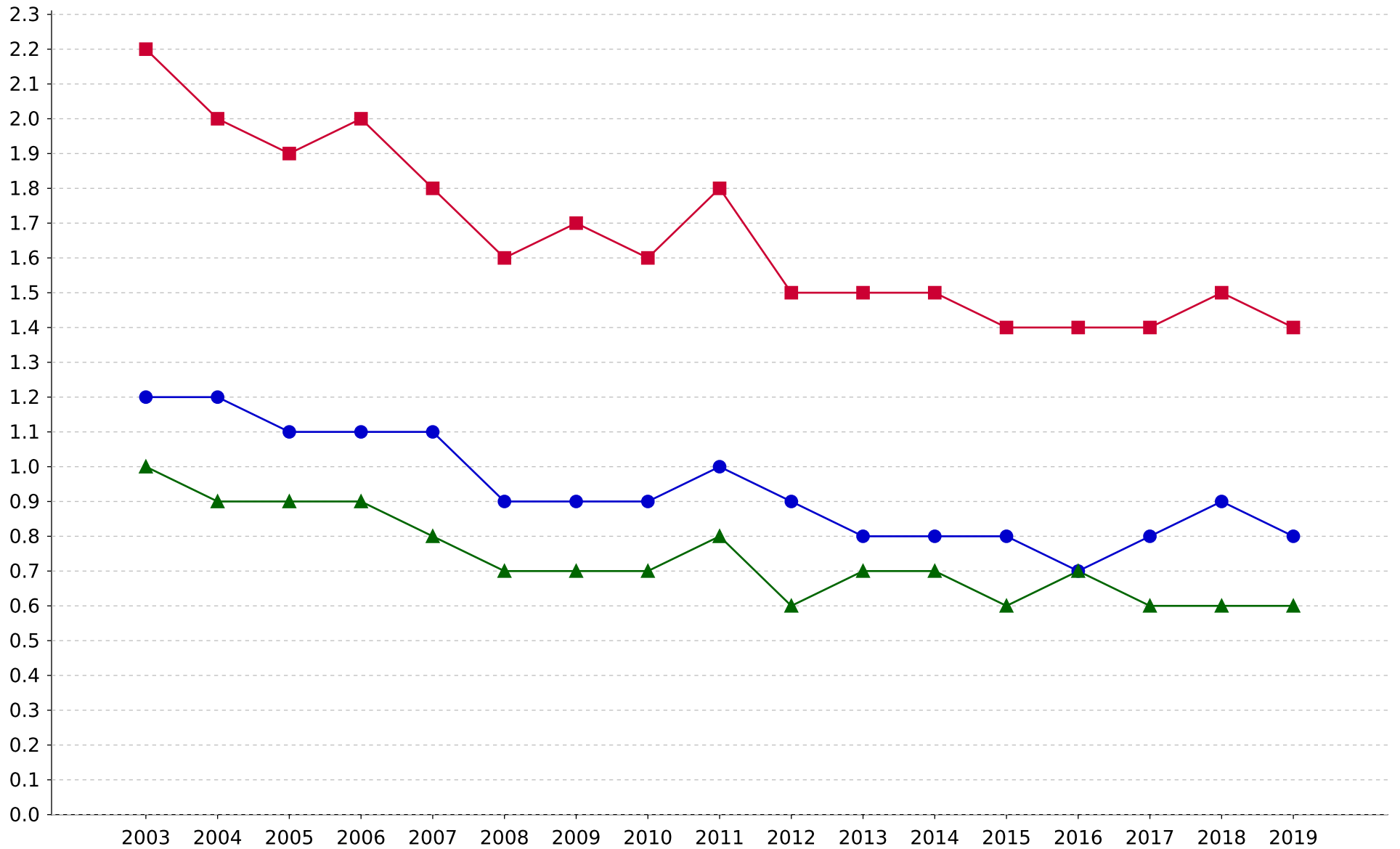


Nonfatal occupational injury and illness incidence rates by case type, South Carolina, private industry, 2003-2019

Year	Cases with days away from work, job transfer, or restriction	Cases with days away from work	Cases with job transfer, or restriction
2003	2.2	1.2	1.0
2004	2.0	1.2	0.9
2005	1.9	1.1	0.9
2006	2.0	1.1	0.9
2007	1.8	1.1	0.8
2008	1.6	0.9	0.7
2009	1.7	0.9	0.7
2010	1.6	0.9	0.7
2011	1.8	1.0	0.8
2012	1.5	0.9	0.6
2013	1.5	0.8	0.7
2014	1.5	0.8	0.7
2015	1.4	0.8	0.6
2016	1.4	0.7	0.7
2017	1.4	0.8	0.6
2018	1.5	0.9	0.6
2019	1.4	0.8	0.6

Nonfatal occupational injury and illness incidence rates by case type, South Carolina, private industry, 2003-2019
[SOURCE : U.S. Bureau of Labor Statistics, U.S. Department of Labor, 2020]

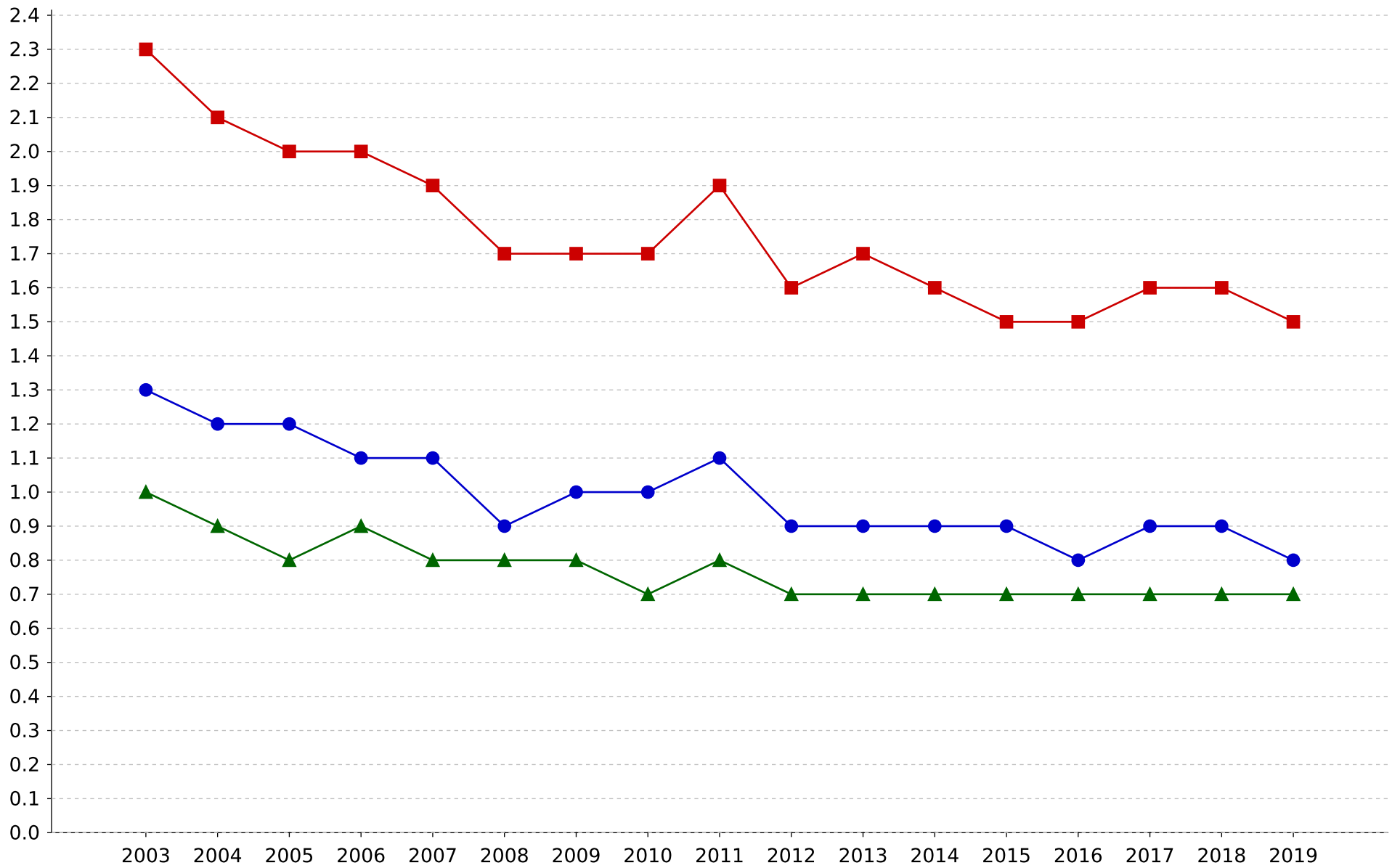


■ Cases with days away from work, job transfer, or restriction ● Cases with days away from work
▲ Cases with days of job transfer, or restriction

Nonfatal occupational injury and illness incidence rates by case type, South Carolina, all ownerships, 2003-2019

Year	Cases with days away from work, job transfer, or restriction	Cases with days away from work	Cases with job transfer, or restriction
2003	2.3	1.3	1.0
2004	2.1	1.2	0.9
2005	2.0	1.2	0.8
2006	2.0	1.1	0.9
2007	1.9	1.1	0.8
2008	1.7	0.9	0.8
2009	1.7	1.0	0.8
2010	1.7	1.0	0.7
2011	1.9	1.1	0.8
2012	1.6	0.9	0.7
2013	1.7	0.9	0.7
2014	1.6	0.9	0.7
2015	1.5	0.9	0.7
2016	1.5	0.8	0.7
2017	1.6	0.9	0.7
2018	1.6	0.9	0.7
2019	1.5	0.8	0.7

Nonfatal occupational injury and illness incidence rates by case type, South Carolina, all ownerships, 2003-2019
[SOURCE : U.S. Bureau of Labor Statistics, U.S. Department of Labor, 2020]

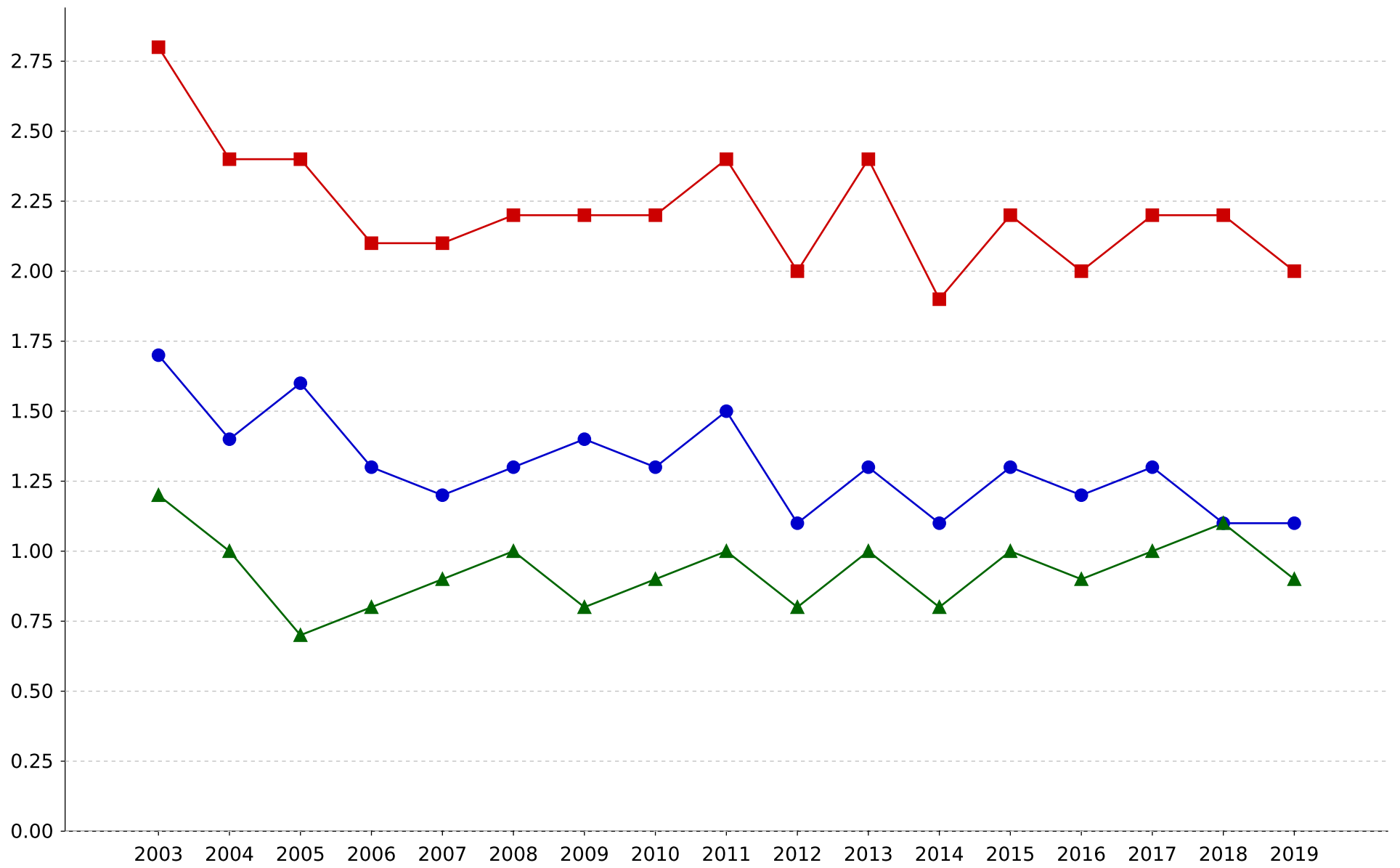


■ Cases with days away from work, job transfer, or restriction ● Cases with days away from work
▲ Cases with days of job transfer, or restriction

Nonfatal occupational injury and illness incidence rates by case type, South Carolina, state and local government, 2003-2019

Year	Cases with days away from work, job transfer, or restriction	Cases with days away from work	Cases with job transfer, or restriction
2003	2.8	1.7	1.2
2004	2.4	1.4	1.0
2005	2.4	1.6	0.7
2006	2.1	1.3	0.8
2007	2.1	1.2	0.9
2008	2.2	1.3	1.0
2009	2.2	1.4	0.8
2010	2.2	1.3	0.9
2011	2.4	1.5	1.0
2012	2.0	1.1	0.8
2013	2.4	1.3	1.0
2014	1.9	1.1	0.8
2015	2.2	1.3	1.0
2016	2.0	1.2	0.9
2017	2.2	1.3	1.0
2018	2.2	1.1	1.1
2019	2.0	1.1	0.9

Nonfatal occupational injury and illness incidence rates by case type, South Carolina, state and local government, 2003-2019
[SOURCE : U.S. Bureau of Labor Statistics, U.S. Department of Labor, 2020]

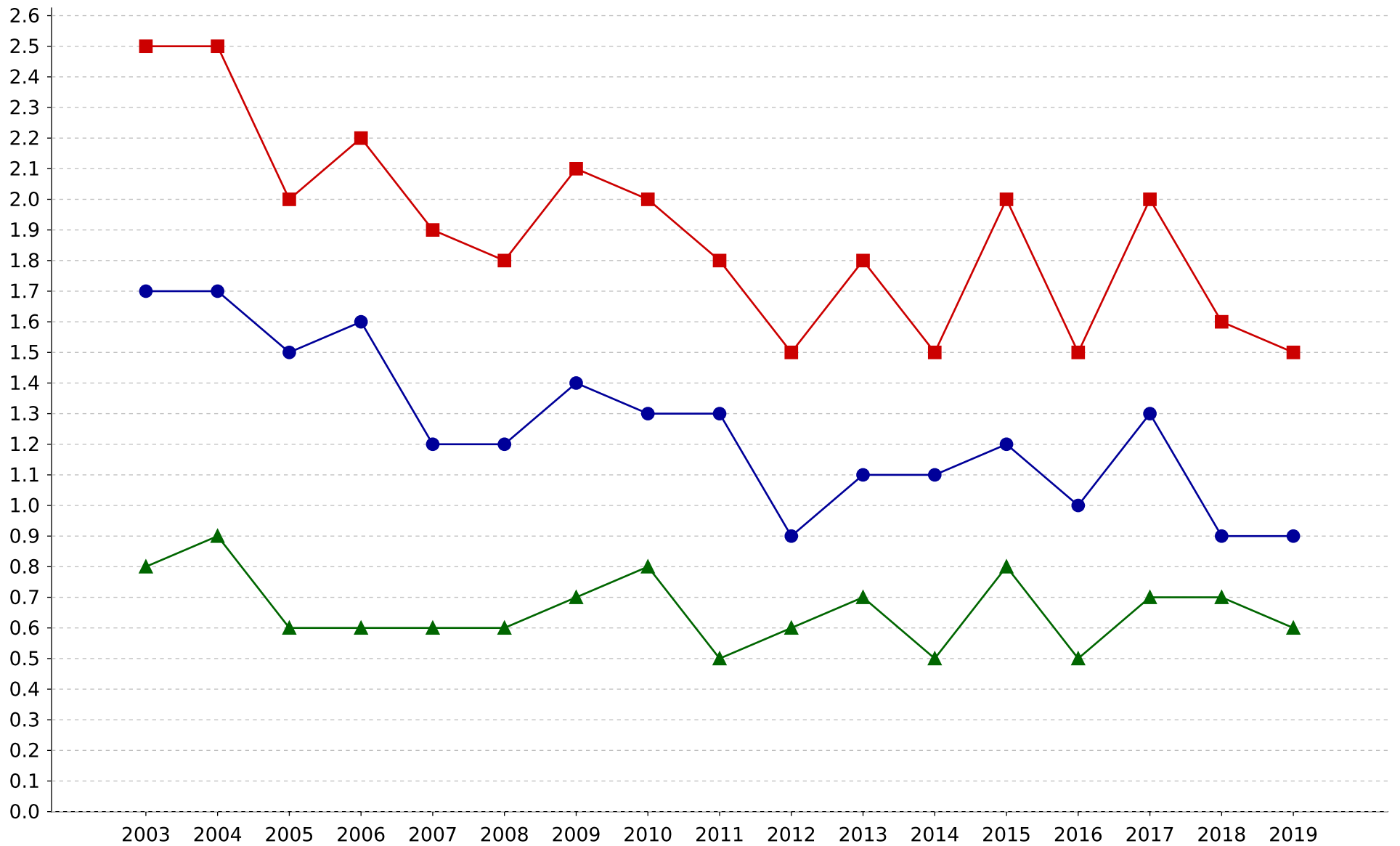


■ Cases with days away from work, job transfer, or restriction ● Cases with days away from work ▲ Cases with days of job transfer, or restriction

Nonfatal occupational injury and illness incidence rates by case type, South Carolina, state government, 2003-2019

Year	Cases with days away from work, job transfer, or restriction	Cases with days away from work	Cases with job transfer, or restriction
2003	2.5	1.7	0.8
2004	2.5	1.7	0.9
2005	2.0	1.5	0.6
2006	2.2	1.6	0.6
2007	1.9	1.2	0.6
2008	1.8	1.2	0.6
2009	2.1	1.4	0.7
2010	2.0	1.3	0.8
2011	1.8	1.3	0.5
2012	1.5	0.9	0.6
2013	1.8	1.1	0.7
2014	1.5	1.1	0.5
2015	2.0	1.2	0.8
2016	1.5	1.0	0.5
2017	2.0	1.3	0.7
2018	1.6	0.9	0.7
2019	1.5	0.9	0.6

Nonfatal occupational injury and illness incidence rates by case type, South Carolina, state government, 2003-2019
[SOURCE : U.S. Bureau of Labor Statistics, U.S. Department of Labor, 2020]

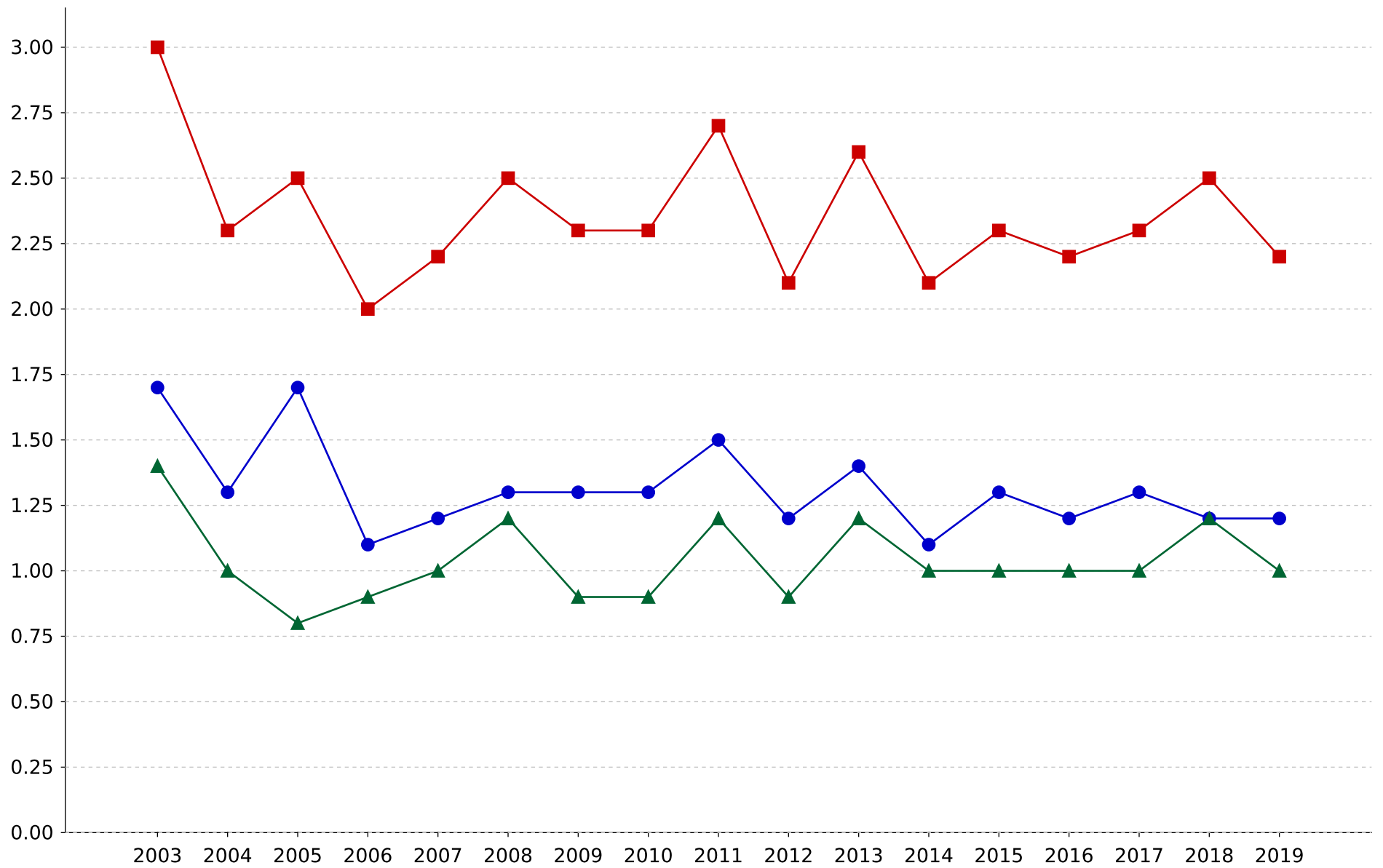


■ Cases with days away from work, job transfer, or restriction ● Cases with days away from work
▲ Cases with days of job transfer, or restriction

Nonfatal occupational injury and illness incidence rates by case type, South Carolina, local government, 2003-2019

Year	Cases with days away from work, job transfer, or restriction	Cases with days away from work	Cases with job transfer, or restriction
2003	3.0	1.7	1.4
2004	2.3	1.3	1.0
2005	2.5	1.7	0.8
2006	2.0	1.1	0.9
2007	2.2	1.2	1.0
2008	2.5	1.3	1.2
2009	2.3	1.3	0.9
2010	2.3	1.3	0.9
2011	2.7	1.5	1.2
2012	2.1	1.2	0.9
2013	2.6	1.4	1.2
2014	2.1	1.1	1.0
2015	2.3	1.3	1.0
2016	2.2	1.2	1.0
2017	2.3	1.3	1.0
2018	2.5	1.2	1.2
2019	2.2	1.2	1.0

Nonfatal occupational injury and illness incidence rates by case type, South Carolina, local government, 2003-2019
[SOURCE : U.S. Bureau of Labor Statistics, U.S. Department of Labor, 2020]



■ Cases with days away from work, job transfer, or restriction ● Cases with days away from work ▲ Cases with days of job transfer, or restriction